



DRILLING LOG



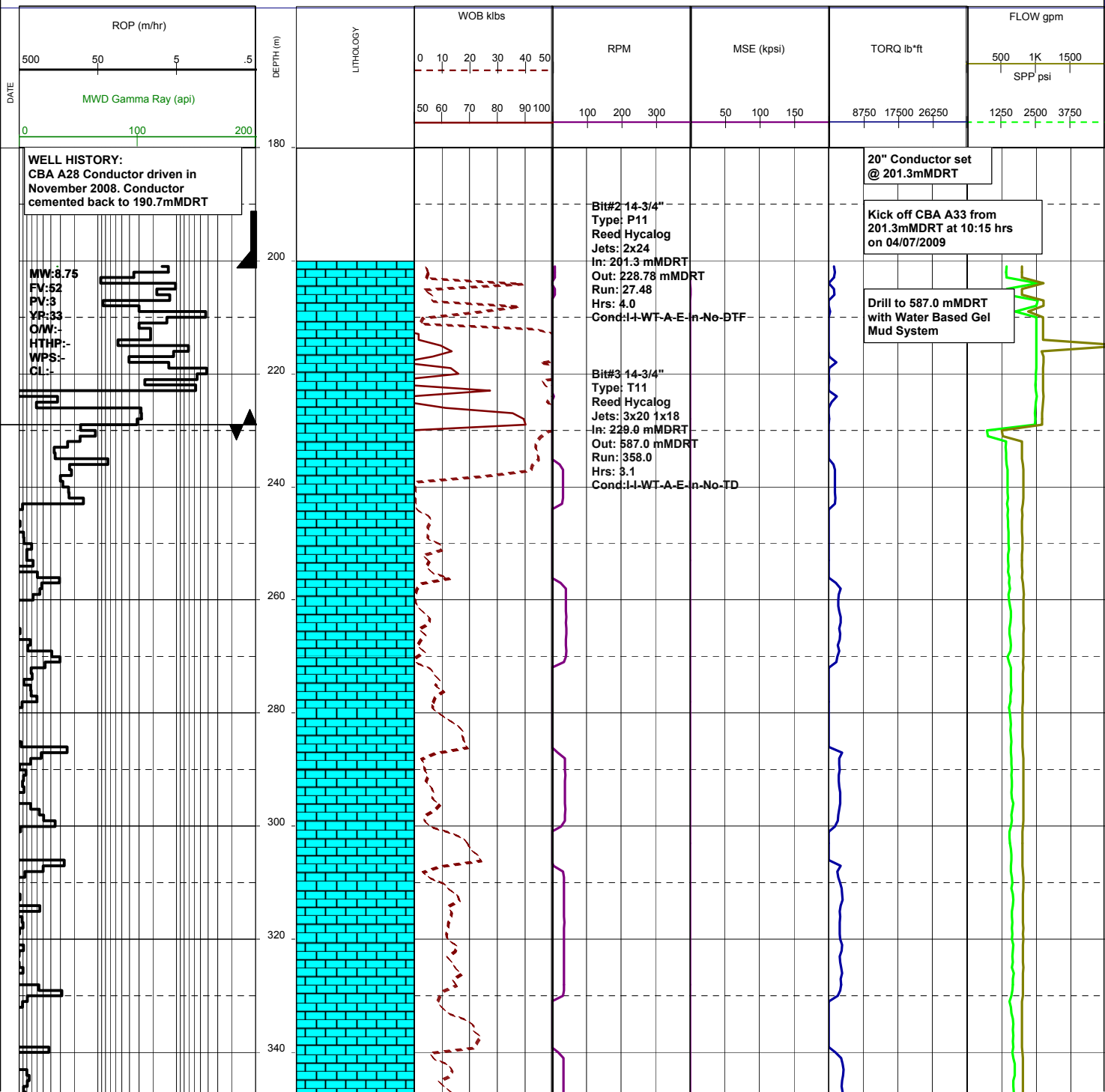
FROM : (m) 180 TO : (m) 4020 SCALE : 1/ 1000

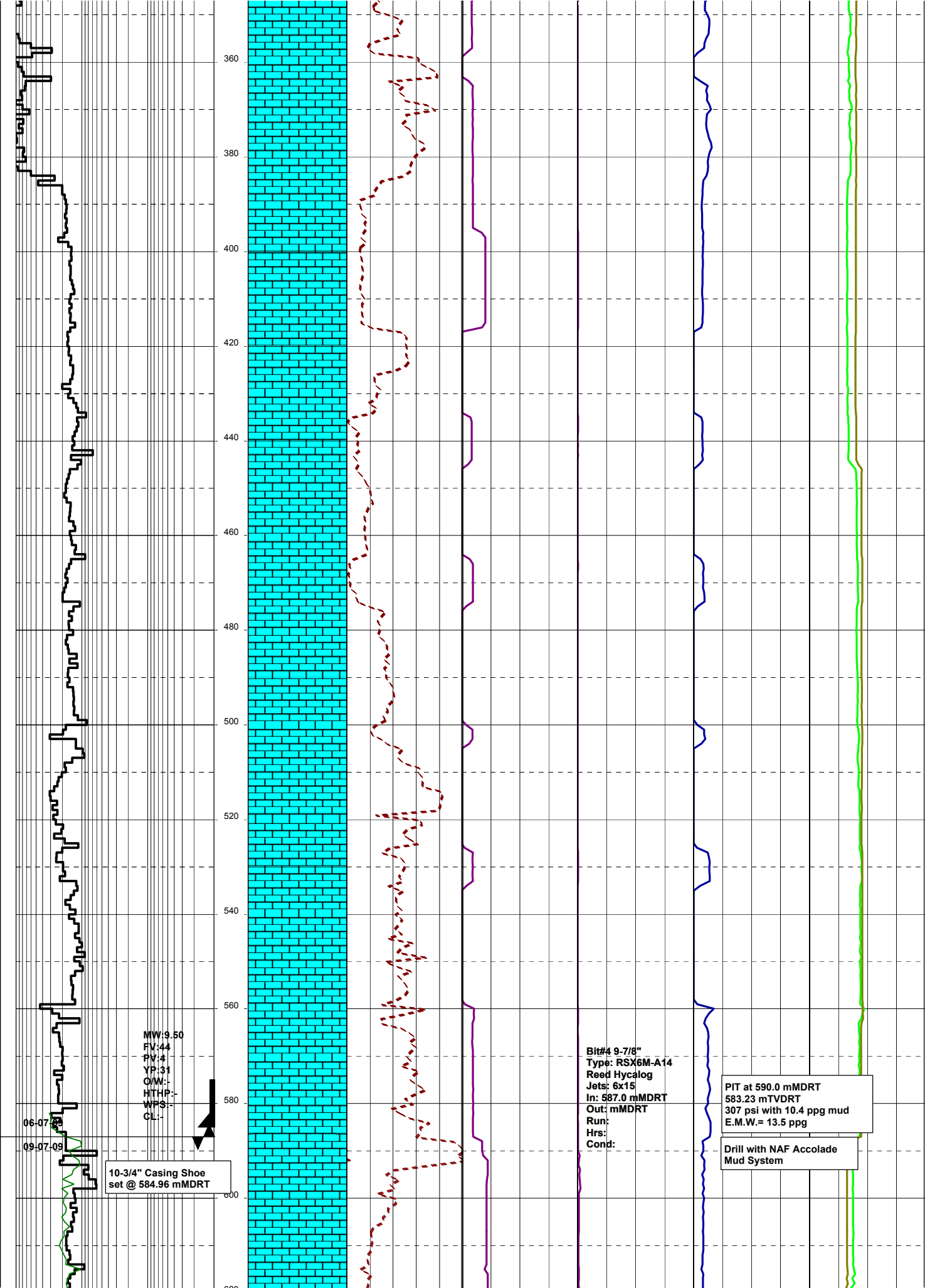
Well Name : Cobia A28
Company : ESSO AUSTRALIA LTD

Country : AUSTRALIA

RT-MSL (m) : 41.0
RT-SEABED (m) : 120.0

Generated by geoNEXT Package





360
380
400
420
440
460
480
500
520
540
560
580
600
620

06-07-2008
09-07-09

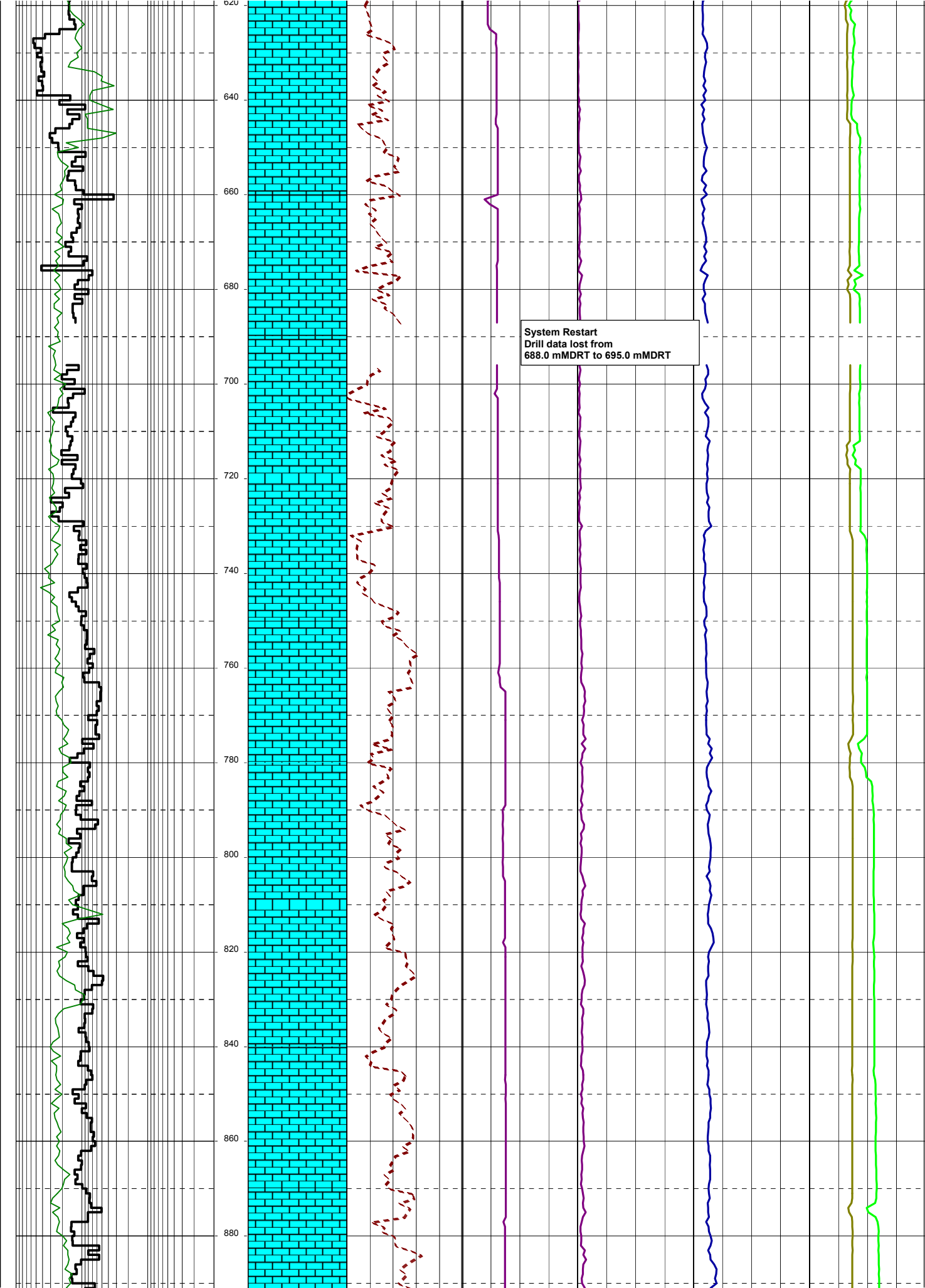
MW: 9.50
FV: 44
PV: 4
YP: 31
O/W: -
HTHP: -
WFS: -
CL: -

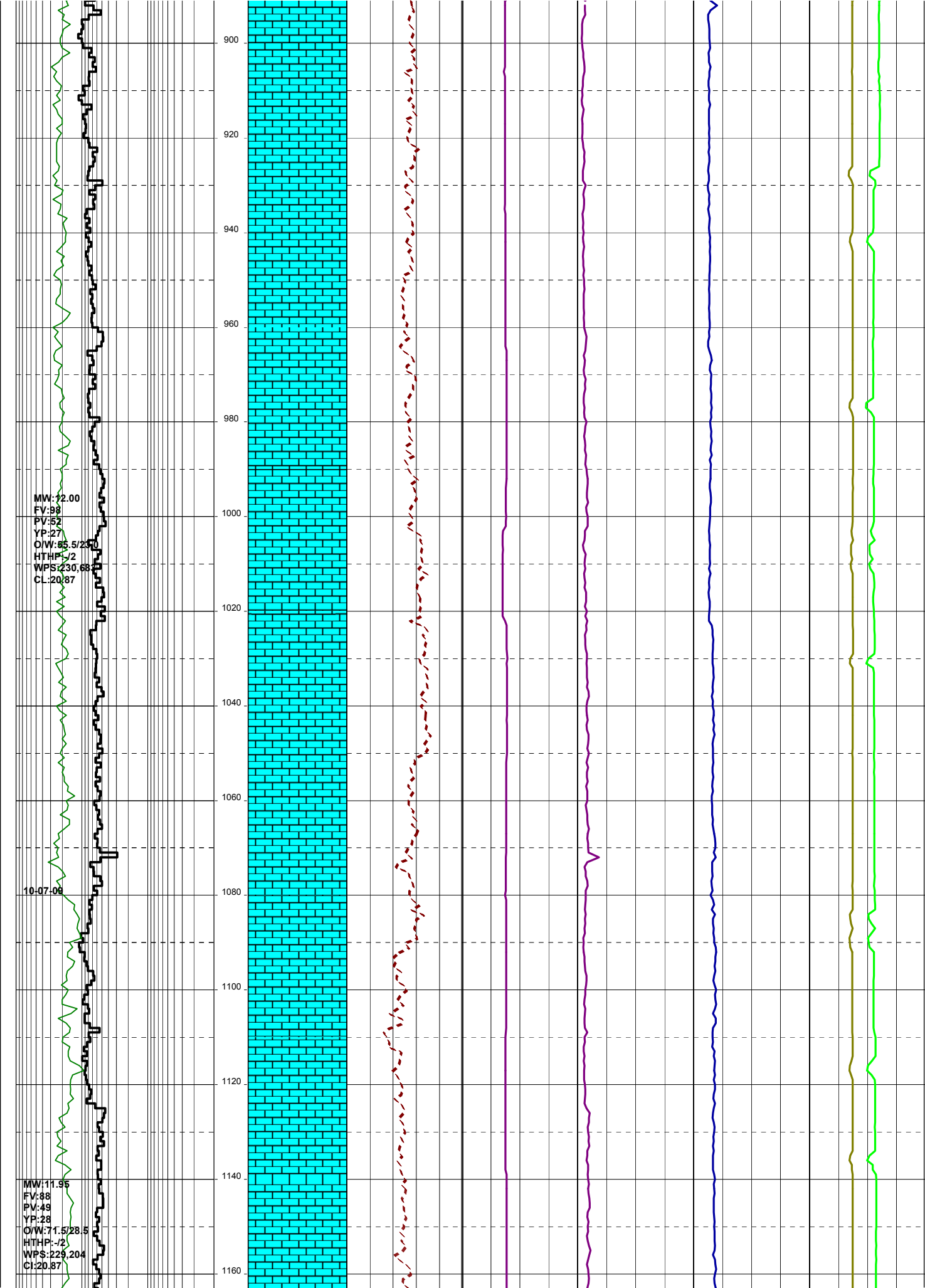
10-3/4" Casing Shoe
set @ 584.96 mMDRT

Bit# 9-7/8"
Type: RSX6M-A14
Reed Hycalog
Jets: 6x15
In: 587.0 mMDRT
Out: mMDRT
Run:
Hrs:
Cond:

PIT at 590.0 mMDRT
583.23 mTVDR
307 psi with 10.4 ppg mud
E.M.W.= 13.5 ppg

Drill with NAF Accolade
Mud System

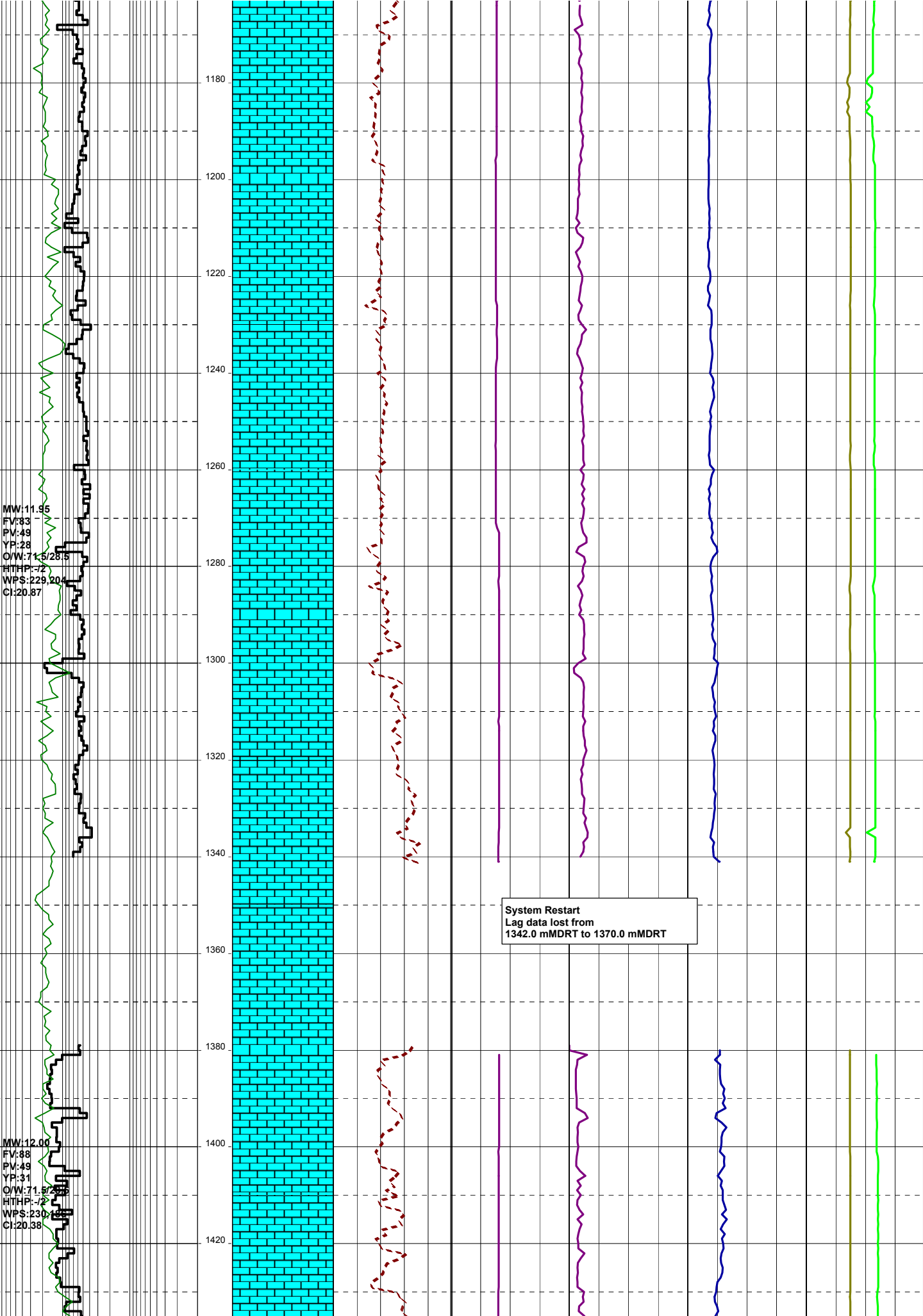


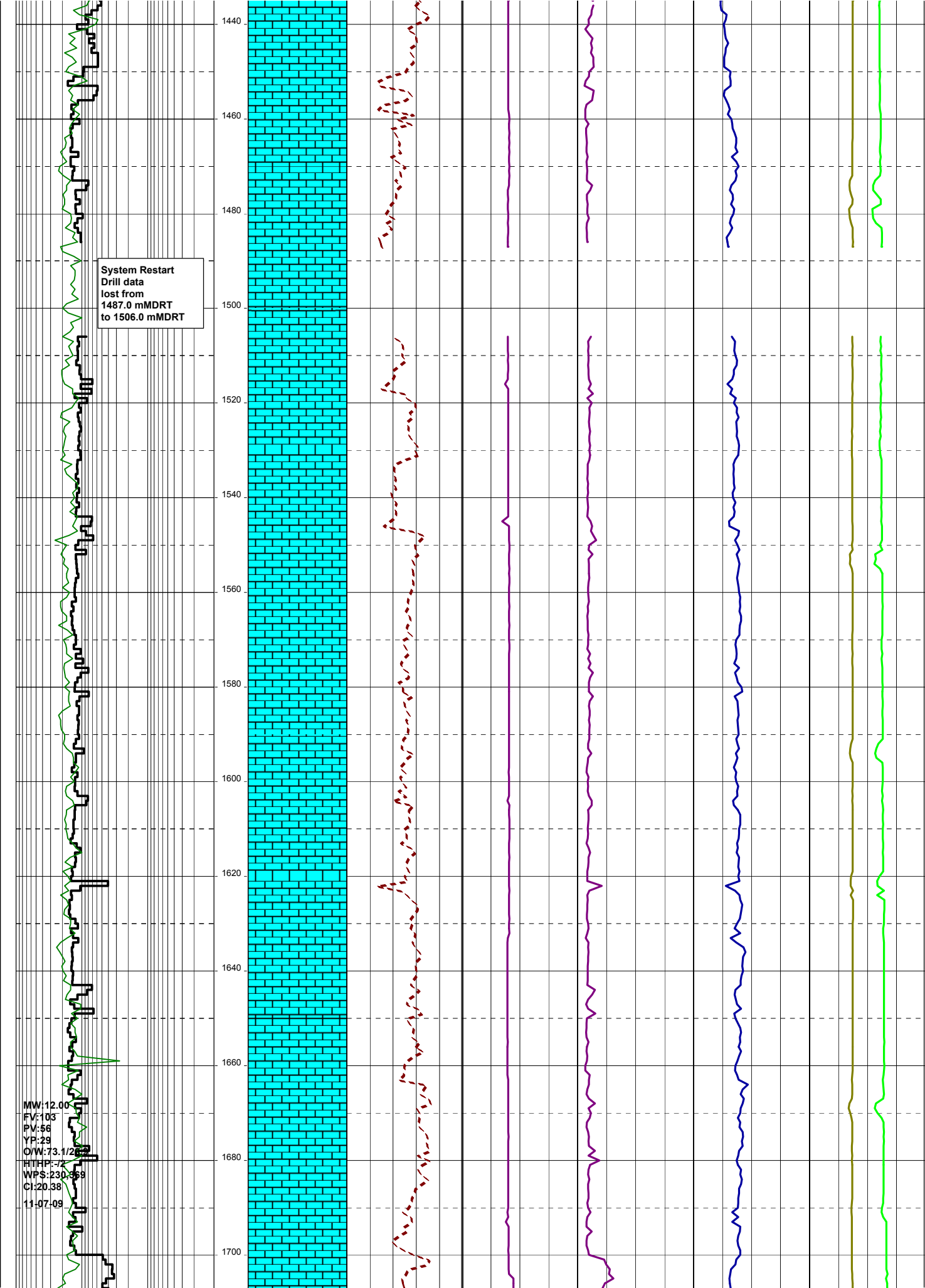


MW: 12.00
FV: 98
PV: 52
YP: 27
OW: 85.5/20
HTHP: -/2
WPS: 230.68
CL: 20.87

10-07-06

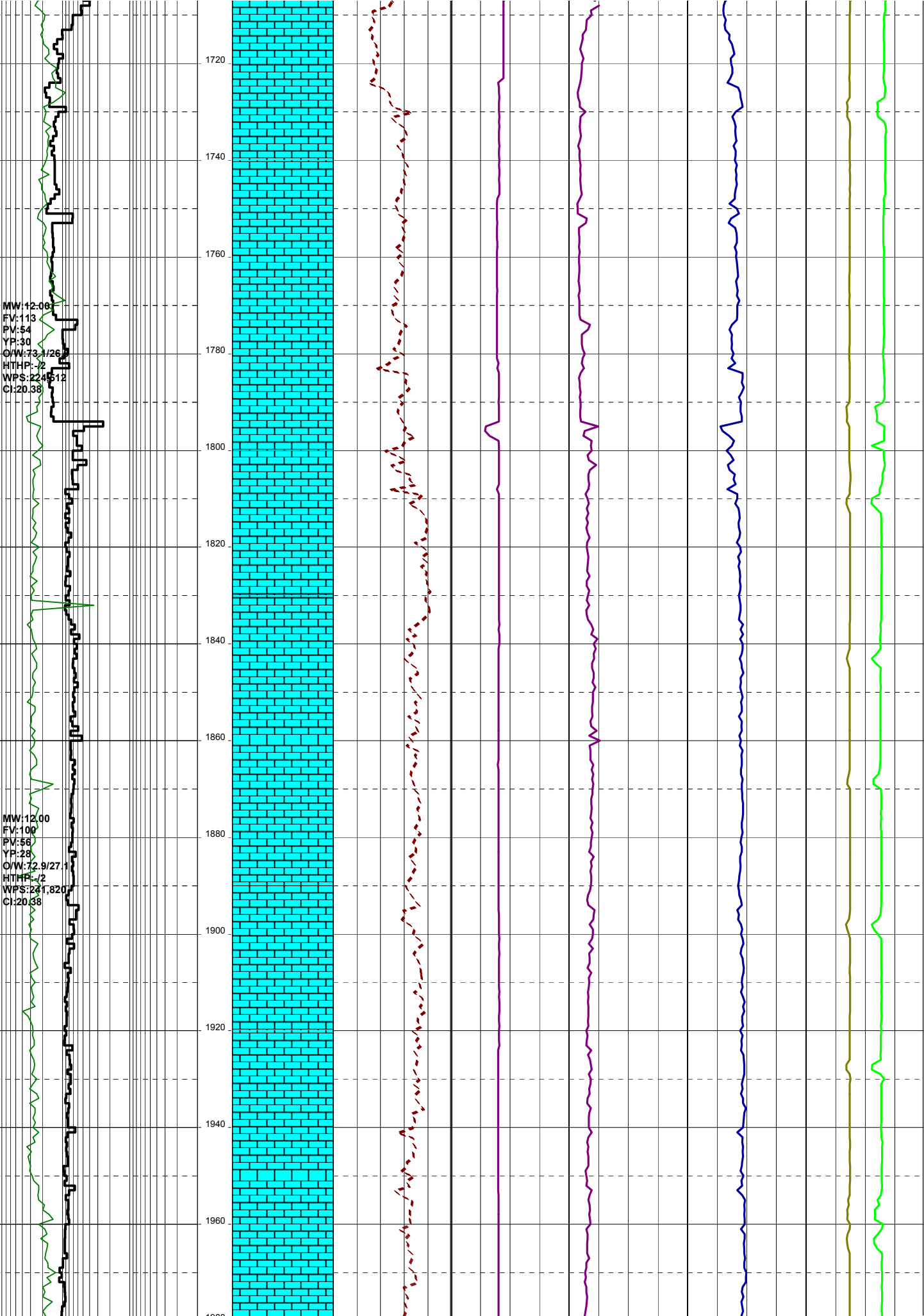
MW: 11.95
FV: 88
PV: 49
YP: 28
OW: 71.5/28.5
HTHP: -/2
WPS: 229.204
CL: 20.87

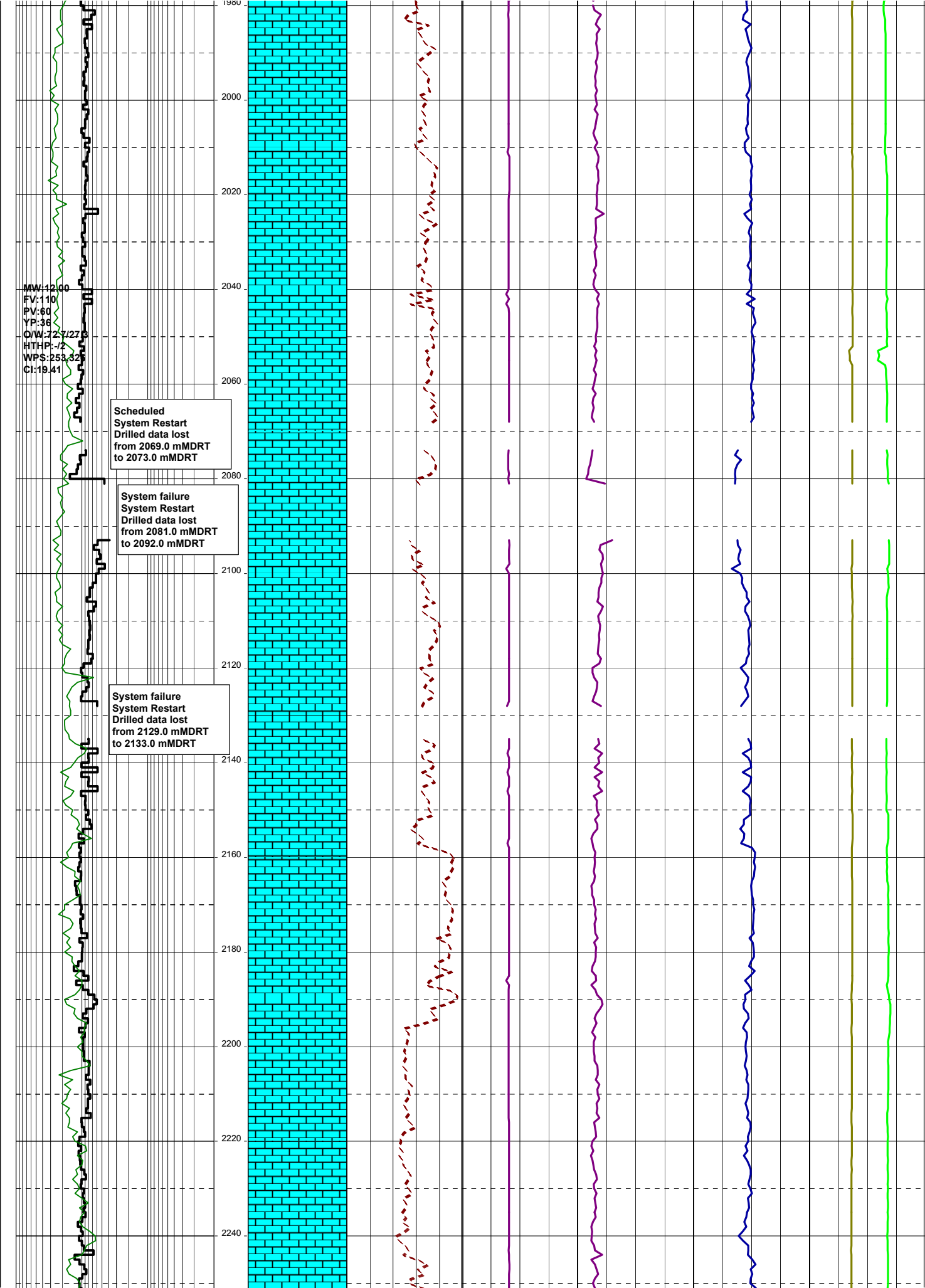




MW:12.06
FV:113
PV:54
YP:30
O/W:73.4/26.6
HTHP:-.2
WPS:224.512
CI:20.38

MW:12.00
FV:100
PV:56
YP:28
O/W:72.9/27.1
HTHP:-.2
WPS:241.820
CI:20.38

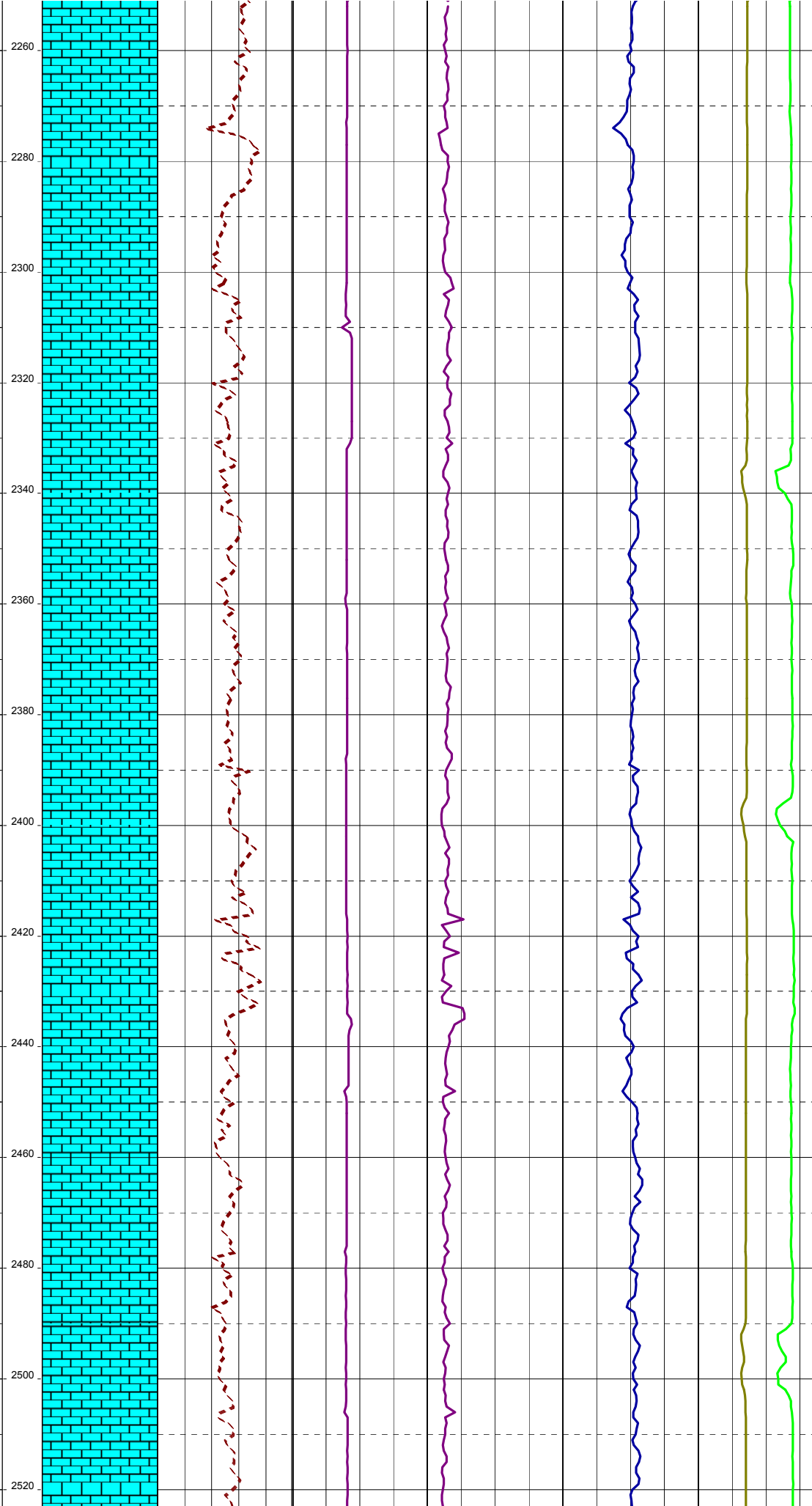




MW:12.00
FV:123
PV:67
YP:35
OW:73.2/26.8
HTHP:-/2
WPS:234.6/3
CI:20.38

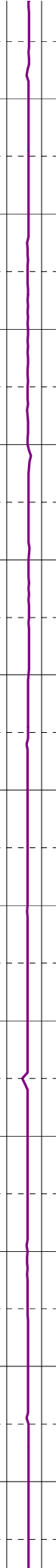
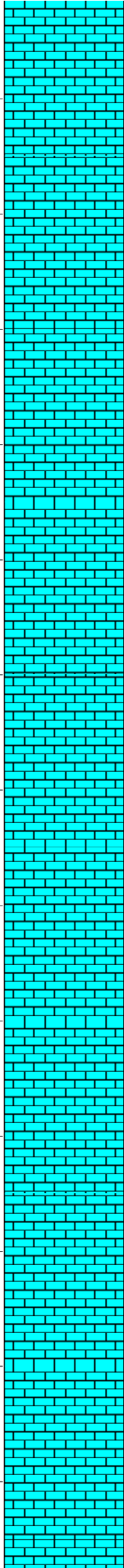
12-07-09

MW:12.00
FV:133
PV:74
YP:39



O/W:73.2/25.8
HTHP:-/2
WPS:234.66
CI:20.38

2540
2560
2580
2600
2620
2640
2660
2680
2700
2720
2740
2760
2780

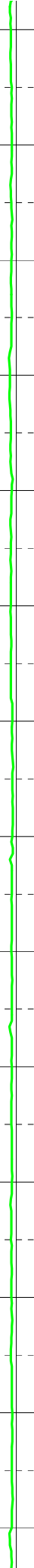
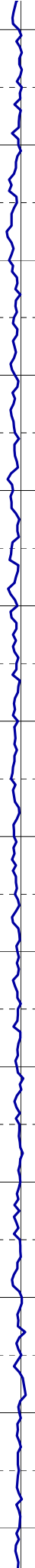
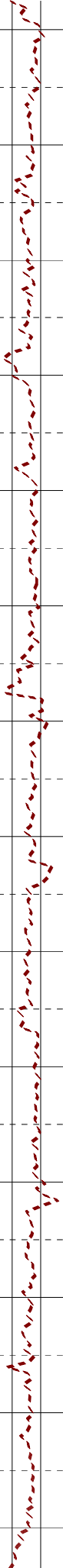
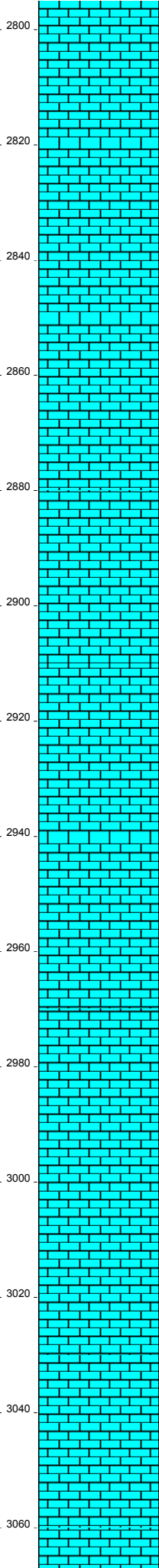


MW:12.00
FV:115
PV:80
YP:33
O/W:73.7/26.3

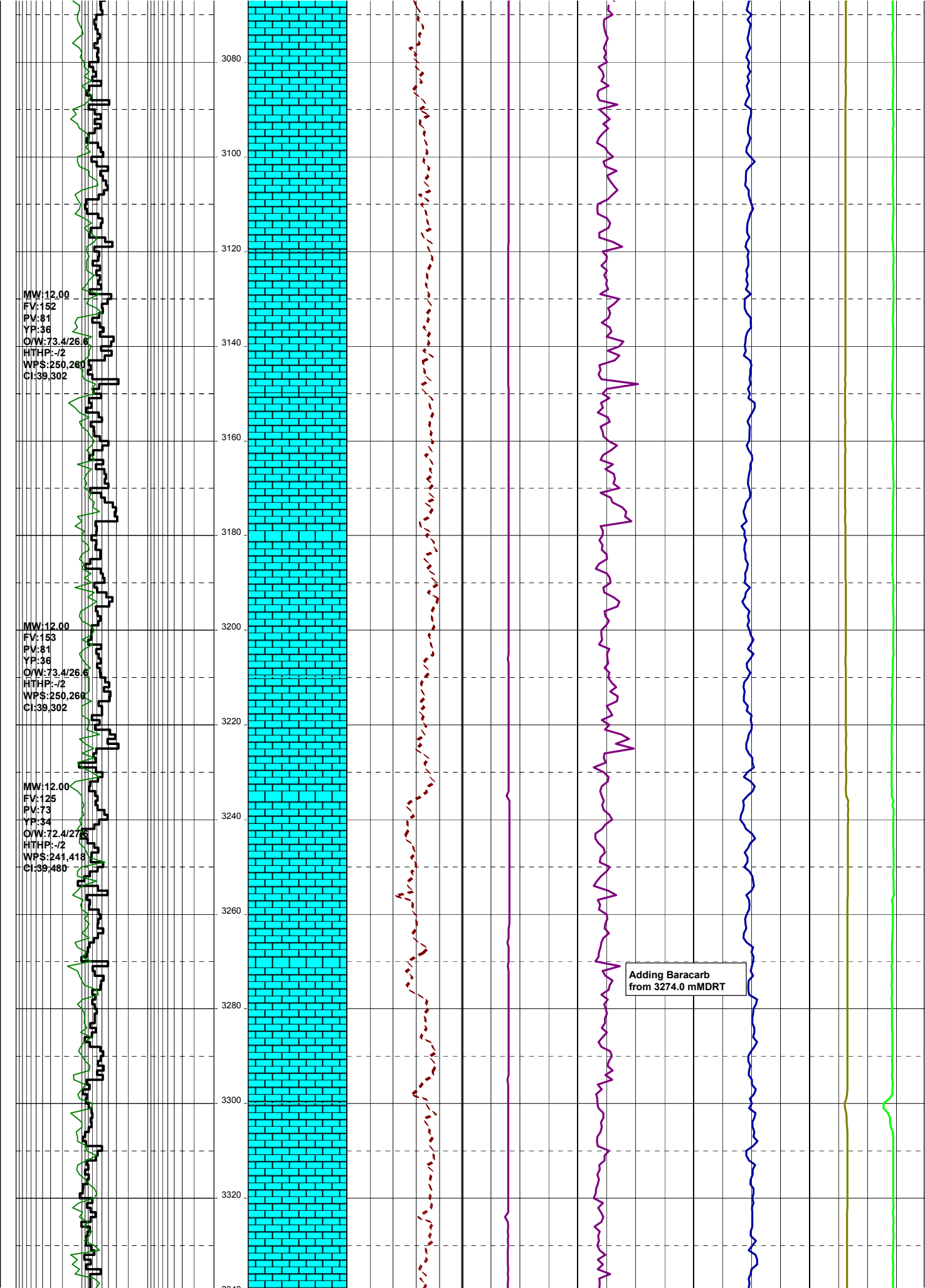
HTHP: -/2
WPS: 238,708
CI: 21.35

MW: 12.00
FV: 146
PV: 82
YF: 37
OW: 73.4/26.6
HTHP: -/2
WPS: 250,260
CI: 21.84

13-07-09



2800
2820
2840
2860
2880
2900
2920
2940
2960
2980
3000
3020
3040
3060

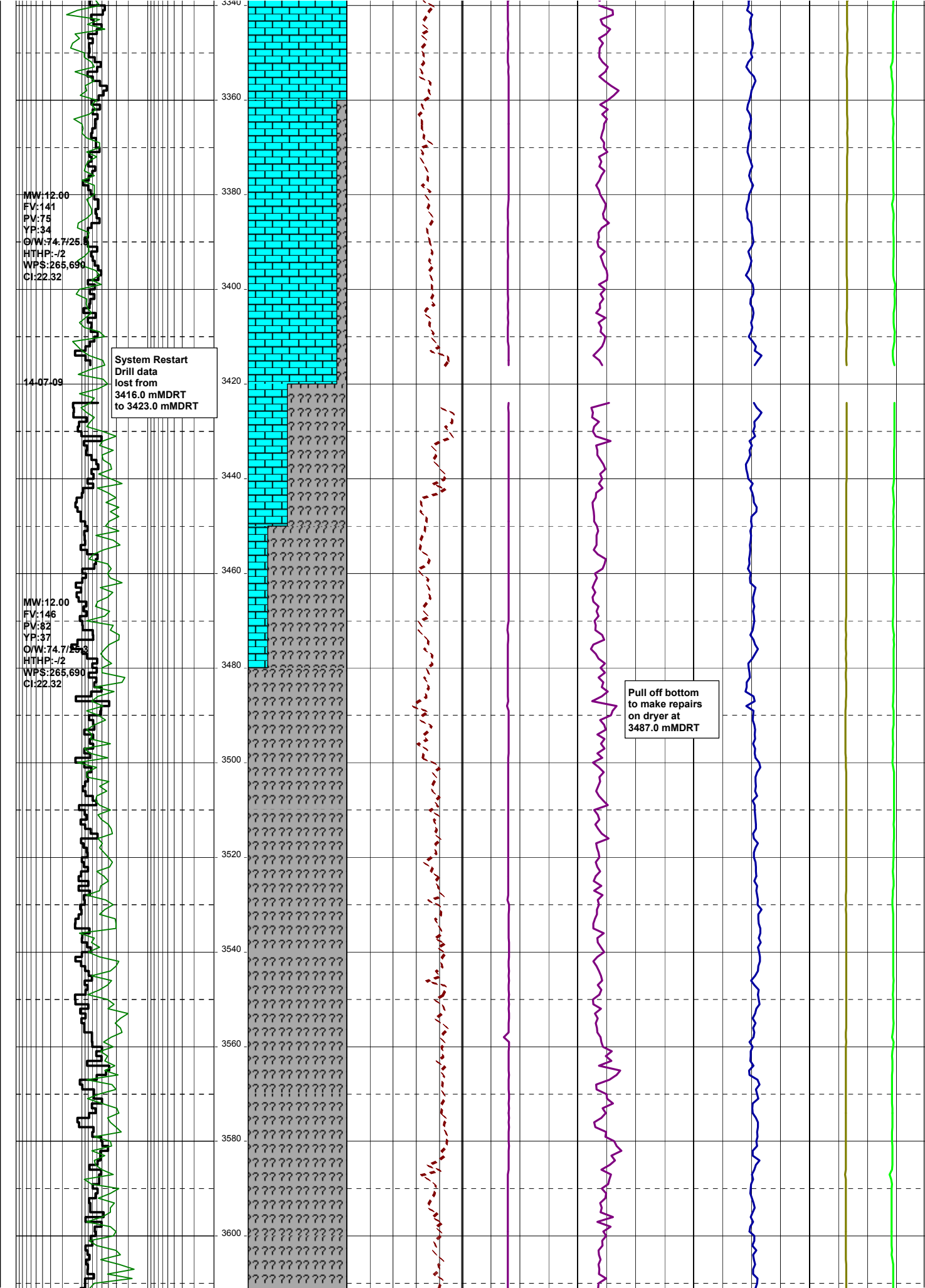


MW: 12.00
FV: 152
PV: 81
YP: 36
O/W: 73.4/26.6
HTHP: -/2
WPS: 250, 260
CI: 39, 302

MW: 12.00
FV: 153
PV: 81
YP: 36
O/W: 73.4/26.6
HTHP: -/2
WPS: 250, 260
CI: 39, 302

MW: 12.00
FV: 125
PV: 73
YP: 34
O/W: 72.4/27.6
HTHP: -/2
WPS: 241, 418
CI: 39, 480

Adding Baracarb
from 3274.0 mMDRT



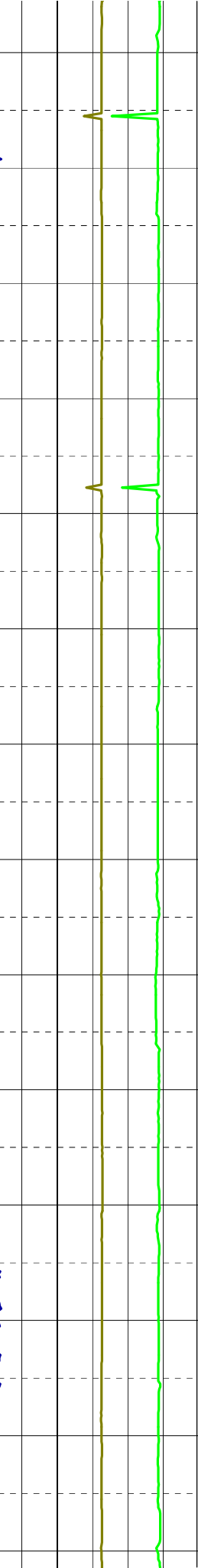
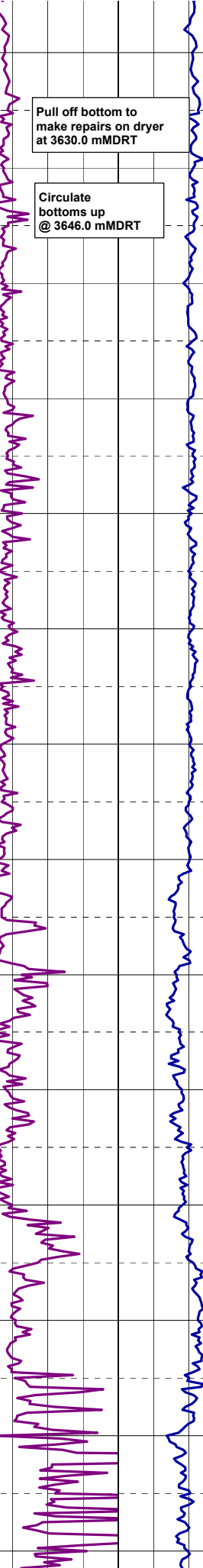
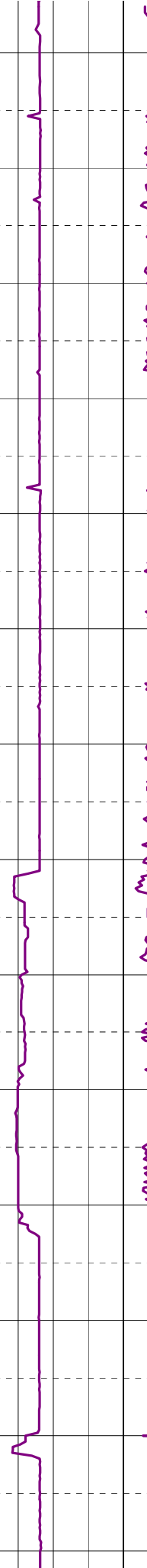
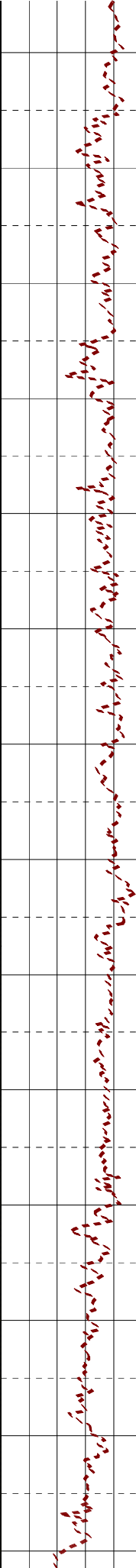
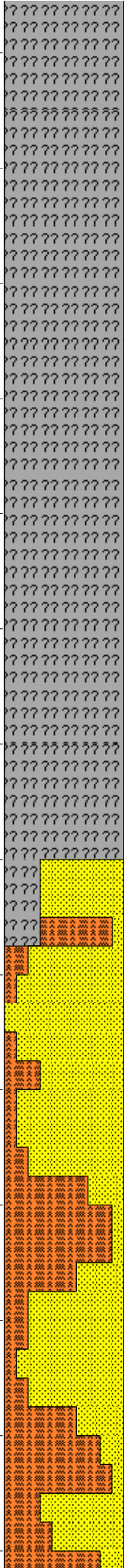
MW:12.00
FV:123
PV:76
YP:31
OW:74.3/25
HTHP:-/2
WPS:256,223
CI:21.35

MW:12.00
FV:134
PV:76
YP:30
OW:75.5/24.5
HTHP:-/2
WPS:276,383
CI:23.29

15-07-09

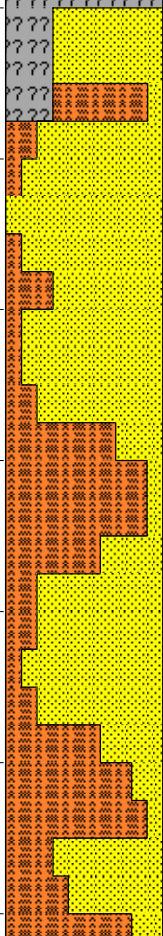
MW:12.00

3620
3640
3660
3680
3700
3720
3740
3760
3780
3800
3820
3840
3860
3880



Pull off bottom to
make repairs on dryer
at 3630.0 mMDRT

Circulate
bottoms up
@ 3646.0 mMDRT



FV:136
PV:84
YP:36
OW:75.5/24.5
HTHP:-2
WPS:276,383
CI:41,042

MW:12.00
FV:115
PV:83
YP:38
OW:74.9/25.1
HTHP:-2
WPS:267,341
CI:40,040

15-07-09

